

### Personal, Social and Emotional Development

- Listening to each other's suggestions on how to plan activities without an adult's help
- Respect
- Sports Day practise – Team Building
- Talking about transition to Year 1

### Physical Development

#### Moving and Handling

- Team work
- Small group games in PE
- Handwriting – writing on the line and controlling letter size
- Sports day practise

#### Health and Self-Care

- Making healthy choices with relation to eating and exercise.

### Communication and Language

- Using our imagination to think of possibilities.
- Recount our experiences and connect ideas.
- Listen attentively for a sustained period in a range of situations

### Expressive Arts and Design

- Self portraits
- Whole school art project
- Junk modelling opportunities
- Using instruments to compose our own music
- Making up our own dances

### Literacy

#### Writing

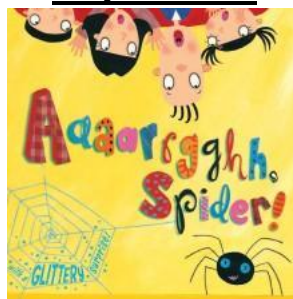
- Simple sentence writing using their phonic knowledge
- Finger spaces between words
- Work on correctly spelling our high frequency words and words of more than one syllable.
- Using features of narrative writing

#### Reading

- Using our phonics to read and write simple words
- Learning to read and write our key words
- Enjoying topic related books including information books in class
- Describe and retell the main events in a story we have just read

## Reception Summer 2 2018

### Topic Plan



### Mathematics

#### Numbers

- Recording addition – number sentences
- Solving subtraction problems practically
- Problem solving involving doubling, halving and sharing
- Counting in 2s, 5s and 10s
- Estimating

#### Shape, space and measure

- Measuring lengths
- 3D Shapes
- Time – ordering our day

### Understanding of the World

- Discussing Ramadan and Eid
- Reflecting on our year in Reception and what we have learnt
- What are we looking forward to in Year 1
- Exploring mini-beast habitats

### Other events

#### Forest school dates

Friday 7<sup>th</sup> June- Mrs Turner's Class  
Friday 21<sup>nd</sup> June- – Mr Farmer's Class  
Friday 28<sup>th</sup> June - Mrs Turner's Class  
Friday 5<sup>th</sup> July – Mr Farmer's Class

Thursday 13<sup>th</sup> June – Trip to Cotswold Wildlife Park  
Friday 14<sup>th</sup> June – Sports Day  
Tuesday 16<sup>th</sup> July – 2.30pm End of Year Celebration – Parents invited. Children to come dressed as what they want to be when they grow up. More details to follow.